

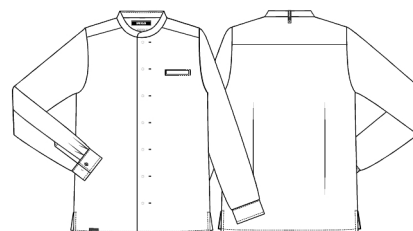
Date: 16-12-2023

25281-936-0-0-101

Chefjacket Tencel™ x Refibra™

KENTAUR®

Work Wear of Denmark



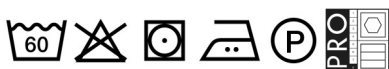
- Responsible Choice
- Recycled polyester from PET bottles
- TENCEL™ Lyocell
- Welt chest pocket
- Front with bartacks for easy access to press buttons
- Hidden press buttons
- Collar strap for bib apron
- Dart on the back
- Side slits

Quality: 50/50% CLY/rPES, 235 g/m2

Colour: white 101

Construction: 2X1 Twill

Size: XS-4XL



Washing instructions

Can be washed according to ISO15797. The garments should always be washed before use. Wash before use, by recommended temperature.

To avoid creases the machine should not be filled more than 2/3. Pressbuttons should be open.

Measurement tolerance +/- 1 cm. All measurements are in cm. Expected measurements after approx. 3 times wash.

		XS	S	M	L	XL	2XL	3XL	4XL
Chest	A	98	104	110	116	124	132	140	148
Waist	B	87	93	99	105	113	121	129	137
Bottom	C	95,5	101,5	107,5	113,5	121,5	129,5	137,5	145,5
Backlength	D	74,5	75,5	76,5	77,5	78,5	79,5	80,5	81,5
Sleevelength incl. cuff	E	63,5	64	64,5	65	65	65	65	65
Shoulder to shoulder	F	42,4	45,2	48	50,8	53,6	56,4	59,2	62