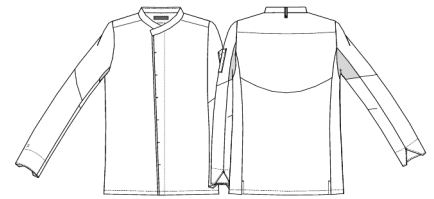


## Gourmet chef jacket



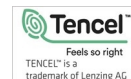
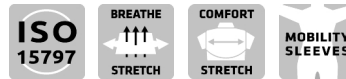
- Modern fit
- A mixture of classic chef jacket and a modern chef shirt
- Stand up collar
- Collar strap for bib apron
- Front with bartacks for easy access to press buttons
- Hidden press buttons
- Divided pen pocket on left sleeve
- The back is cut in bias for more comfort and freedom to move
- Long sleeves in an ergonomic cut
- Breathable jersey under the sleeves, which gives a better comfort and freedom to move
- Sleeve cut which does not lift up the whole jacket during movement
- Practical elastic band to easily pull up sleeves
- Cuffs
- Side slits

**Quality:** 50/50% CLY/PES, 215 g/m2

**Colour:** white 101

**Construction:** 2X1 Twill

**Size:** XS-4XL



### Washing instructions

Can be washed according to ISO15797. The garments should always be washed before use. Wash before use, by recommended temperature.

To avoid creases the machine should not be filled more than 2/3. Info about the washing of Tencel can be found on the website Pressbuttons should be open.

Measurement tolerance +/- 1 cm. All measurements are in cm. Expected measurements after approx. 3 times wash.

	XS	S	M	L	XL	2XL	3XL	4XL
Chest	101	109	117	125	133	141	149	159
Waist	93,5	101,5	109,5	117,5	125,5	133,5	141,5	151,5
Bottom	100	108	116	124	132	140	148	158
Length C.B.	73	74	75	76	77	78	79	80
Sleeve length	59,3	59,9	60,5	61,1	61,7	62,3	62,9	63,5